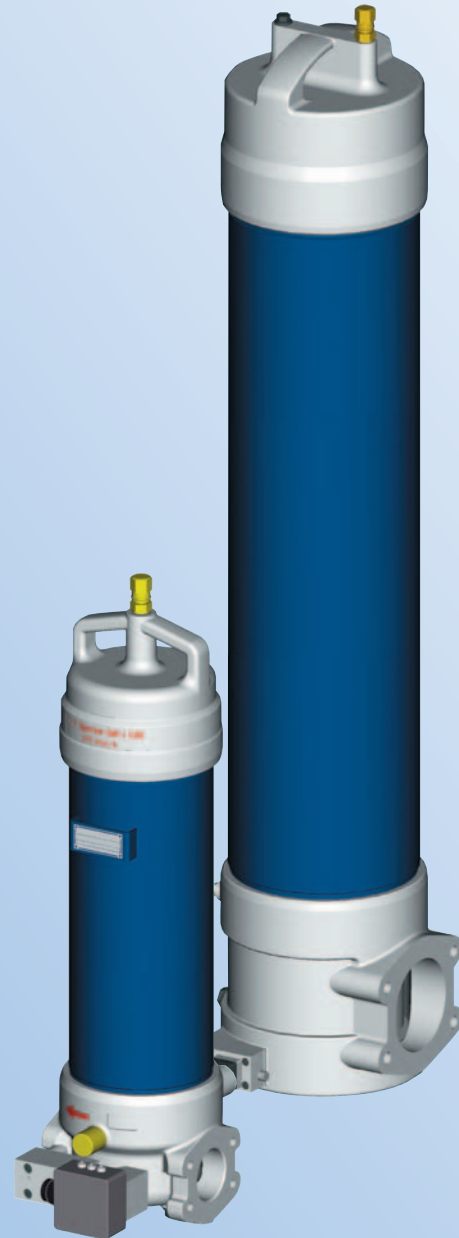




Industrial Filters · Accumulators

Inline Filters

40 FLE 0020(C) - 0270(C)
40 FLEN 0160 - 1000



Filters for inline installation

Designed for offline filtration

*Installation of environment - friendly
ECOPore Filter Elements with
reusable core (central tube)*

Large filter area

*Optimised flow characteristics
by 3D - computer aided design*

Low pressure drop

*Special high efficient
filter media*

Operating pressure: 40 bar

Connection up to SAE 4"



Quality assured!

Inline Filters

40 FLE 0020(C) - 0270(C)
 40 FLEN 0160 - 1000
 Operating pressure 40 bar
 Operating temperature -10°C to +100°C
 Connection up to SAE 4"

Application

Filtration of pressurised liquids and lubricants.
 Filtration of liquids and gases.
 Direct installation in pipelines. Direct wear protection of subsequent components and systems.
 Offline filtration with high service time.

Design

Modular design constructed out of three parts including filter bowl with inlet and outlet, filter body and threaded filter head.

Filter Element

Pleated design with optimised pleat density and various filter media. The filter element is the most important component of the filter in view of prolonged life and wear protection of the system.

Oil cleanliness, the initial pressure drop and the dirt holding capacity are the most important criteria for selection.
 For further detailed information please refer our "Filter Elements" brochure.
 A proper filter selection is enabled by our "EPE - FILTERSELECT" software.

Accessories

Maintenance Indicators

For monitoring the filter element's contamination status, visual and visual/electrical indicators, with one or two switching points are available.

Bypass Valve

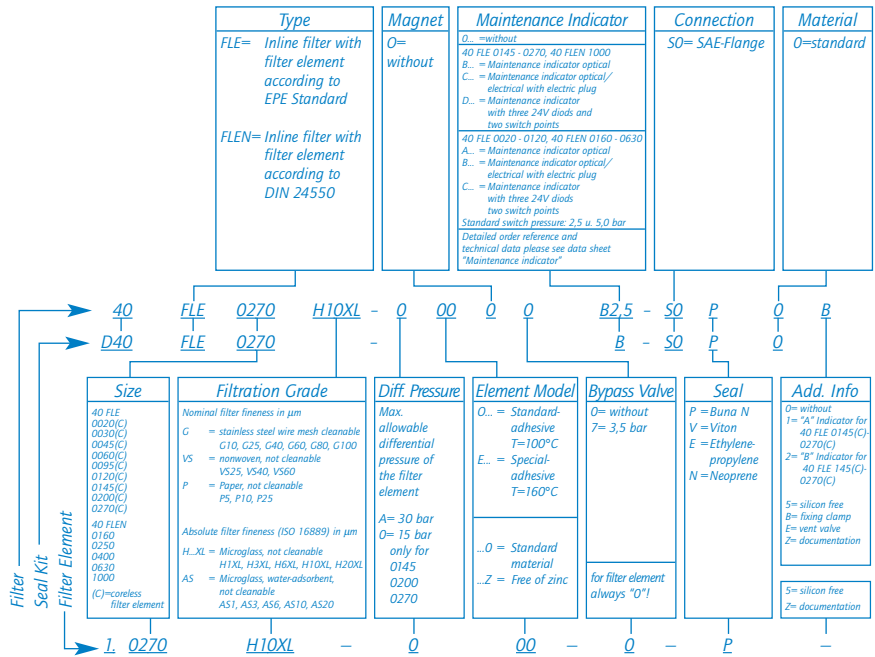
To protect the filter element during start up and over pressurisation due to clogging.

Vent Valve

For removing the air from the filter during starting and for safe de-pressurisation.

K. & H. Eppensteiner GmbH & Co.KG
 Hardtwaldstraße 43 · D-68775 Ketsch
 P.O.Box 1120 · D-68768 Ketsch
 Phone: +49 62 02 / 6 03-0
 Telefax: +49 62 02 / 6 03-1 99
 E-Mail: info@eppensteiner.de
 Internet: www.eppensteiner.de

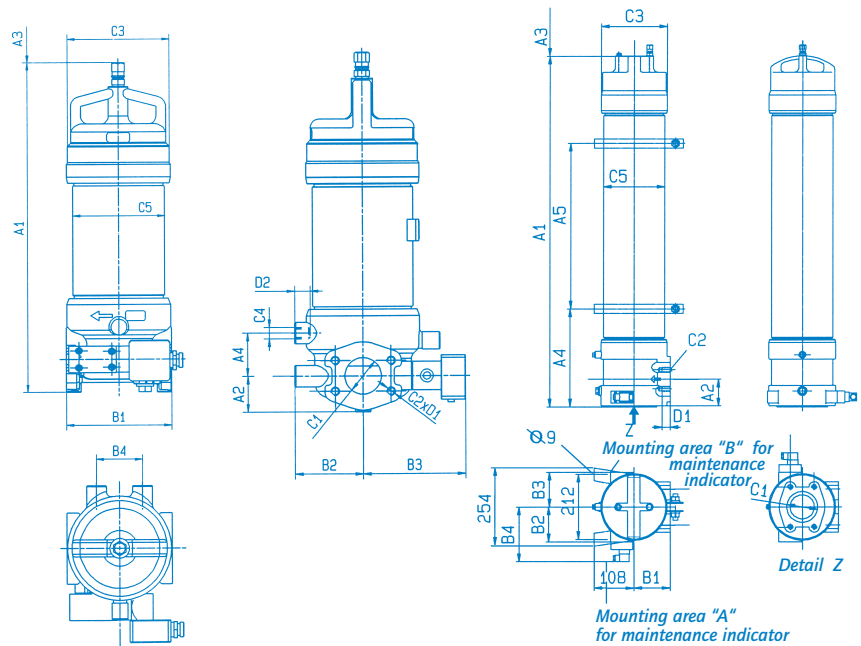
Ordering Information



Dimensions

40 FLE 0020(C) - 0120(C)
 40 FLEN 0160 - 0630

40 FLE 0145(C) - 0270(C)
 40 FLEN 1000



Type	Capacity in l	Weight in kg ¹⁾	A1	A2	A3 ²⁾	A4	A5	B1	B2	B3	B4	C1	C2	C3	C4	C5	D1	D2
40 FLE 0020(C)	1,4	12,0	471		160													
40 FLE 0030(C)	2,7	13,2	501	49,5	250	60		160	95	143	70	SAE2*3000psi DN50	M12	Ø158	M16	Ø140	21	22
40 FLE 0045(C)	4,8	19,0	651		400													
40 FLE 0060(C)	4,0	19,5	543		250													
40 FLE 0095(C)	7,1	21,9	693	61,5	400	70		195	105	155	90	SAE3*3000psi DN80	M16	Ø188	M16	Ø170	21	20
40 FLE 0120(C)	14	27,4	1050		750													
40 FLE 0145(C)	12	50	553		400	260	65											
40 FLE 0200(C)	22	60	911	90	758		310	118	113	113	183	SAE4*3000psi DN100	M16	Ø188	-	Ø200	26	-
40 FLE 0270(C)	28	70	1145		992		320	118	113	113	183	SAE4*3000psi DN100	M16	Ø216	-	Ø200	26	-
40 FLEN 0160	1,4	12,0	471		160													
40 FLEN 0250	2,7	13,2	501	49,5	250	60		160	95	143	70	SAE2*3000psi DN50	M12	Ø158	M16	Ø140	21	22
40 FLEN 0400	4,0	19,5	543		250													
40 FLEN 0630	7,1	21,9	693	61,5	400	70		195	105	155	90	SAE3*3000psi DN80	M16	Ø188	M16	Ø170	21	20
40 FLEN 1000	12	50	553	90	758	260	65	118	113	113	183	SAE4*3000psi DN100	M16	Ø216	-	Ø200	26	-

¹⁾ = Weight including standard filter element and maintenance indicator
²⁾ = Construction dimension for filter element change

More technical data see data sheet No. T40.1 E-GB
 Technical modification reserved!