



Industrial Filters · Accumulators

Duplex Filter

40 FLD 0060-0120

40 FLDN 0400-0630

Application

Filtration of pressurised liquids and lubricants.

Filtration of liquids and gases.

Direct installation in pipelines.

Direct wear protection of subsequent components and systems.

Design

Two filter housings in welding steel design, connected by a change-over valve.

Connections lying one on top of the other at the front side of the change-over valve.

Material: as per spare parts list.

Filter Element

Pleated design with optimised pleat density and various filter media. The filter element is the most important component of the filter in view of prolonged life and wear protection of the system. Oil cleanliness, the initial pressure drop and the dirt holding capacity are the most important criteria for selection.

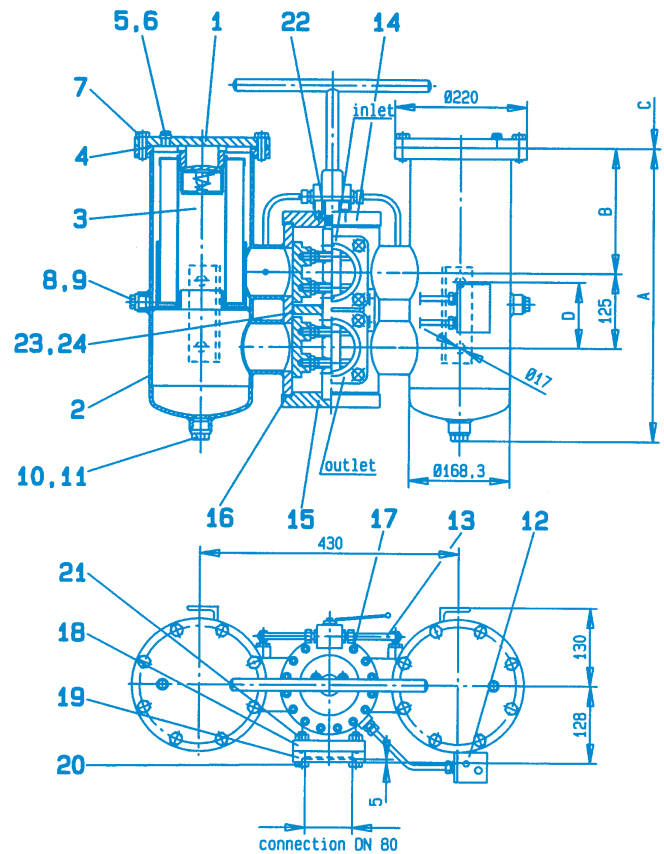
For further detailed information please refer our "Filter Elements" brochure.

A proper filter selection is enabled by our "EPE-FILTERSELECT" software.

Accessories

Bypass Valve

To protect the filter element during start up and over pressurisation due to clogging.



Spare Parts

Pos.	Quantity	Designation	Material	Ordering information
1	2	Filter cover	St	Please indicate ord. inf. „Filter“
2	1	Filter housing	St	Please indicate ord. inf. „Filter“
3	2	Filter element	Various	Please indicate ord. inf. „Filter element“
4	2	O-ring	Buna N	Part-No. 261
5	2	Air ventilate screw or vent valve	Bronze	Part-No. 4158 Part-No. 848
6	2	Sealing ring	Soft iron	Part-No. 832
7	16	Hexagon screw	8.8	Part-No. 595
8	2	Blanking plug	St	Part-No. 789
9	2	Sealing ring	Soft iron	Part-No. 833
10	2	Blanking plug	St	Part-No. 790
11	2	Sealing ring	Soft iron	Part-No. 834
12	1	Maintenance indicator	Various	Refer selection „Maintenance indicator“
13	1	Pressure equalisation line	Various	Please indicate ord. inf. „Filter“
14	1	Cover	St	Part-No. 4052
15	1	Bottom	St	Part-No. 4051
16	2	Sealing	IT	Part-No. 1089
17	32	Hexagon socket head cap screw	8.8	Part-No. 639
18	2	Counter flange	St	Part-No. 4359
19	2	O-ring	Buna N	Part-No. 219
20	8	Hexagon screw	8.8	Part-No. 597
21	8	Hexagon nut	St	Part-No. 683
22	2	O-ring	Buna N	Part-No. 126
23	1	O-ring	Buna N	Part-No. 235
24	1	Guide ribbon	PTFE	Part-No. 4044

Dimensions

Type	Capacity in l	Weight in kg ¹⁾	A	B	C ²⁾	D
40 FLD 0060	2x8	84	485	205	270	110
40 FLD 0095	2x11	86	635	355	420	110
40 FLD 0120	2x18	99	992	712	780	250
40 FLDN 0400	2x8	84	485	205	270	110
40 FLDN 0630	2x11	86	635	355	420	110

¹⁾ = Weight including standard filter element and maintenance indicator
²⁾ = Construction dimension for filter element change



Quality assured!

K. & H. Eppensteiner GmbH & Co. KG
 Hardtwaldstraße 43 · D-68775 Ketsch
 P.O. Box 1120 · D-68768 Ketsch
 Phone +49 62 02 / 6 03-0
 Telefax +49 62 02 / 6 03-199
 E-Mail: info@eppensteiner.de
 Internet: www.eppensteiner.de

Ordering Information

Selection of filter size:
Using the computer program
EPE-FILTERSELECT.

Special designs available
on request.

Filter Type	Magnet	Maintenance Indicator	Connection	Material
FLD = Duplex Filter with EPE standard Filter element FLDN = Duplex Filter with filter element acc. to DIN 24550	0 = Without	O... = Without A... = Visual maintenance indicator B... = Combined visual/electrical indicator with electric plug D... = Combined visual/electrical indicator with 3 signal lights Standard switch pressure: 2.5 bar For extensive ordering information and technical data refer section "Maintenance Indicator"!	FO = Standard	O = Standard

Filter Assembly → 40 FLD 0060 H10SL - A 00 - 0 6 A2,5 - FO P 0 0

Dichtungssatz → D 40 FLD 0060 - A - FO P 0 0

Nominal Pressure	Nominal Size	Filtration Grade	Differential Pressure	Filter Element Design	Bypass Valve	Seal	Add. Info
40 bar	40 FLD ... 0060 0095 0120 40 FLDN ... 0400 0630	Nominal filtration grade in µm G = stainless steel wire mesh, cleanable G10 G25 G40 G60 G80 G100 VS = Nonwoven media, not cleanable VS25 VS40 VS60 P = Paper, not cleanable P5 P10 P25 Absolute filtration grade (ISO 4572) in µm H...SL = Micro glas-fibre, not cleanable H1SL H3SL H6SL H10SL H20SL AS = Micro glas-fibre, water adsorbing, not cleanable AS1 AS3 AS6 AS10 AS20	Maximum allowable differential pressure drop across the filter element A=30 bar	O... = Standard adhesive T = 100°C E... = Special adhesive T = 160°C ...O = Standard material ...V = stainless steel 1.4571	Opening pressure 0 = Without 6 = 3,0 bar	P = Buna N V = Viton E = Ethylene-Propylene N = Neoprene	O = Without A = Pressure equalisation line E = Vent valve Z = Certificates S = Silicone free
Filter Element					For Filter element always 0		5 = Silicone free Z = Certificates

Filter Element → 1. 0060 H10SL - A - 00 - 0 P -

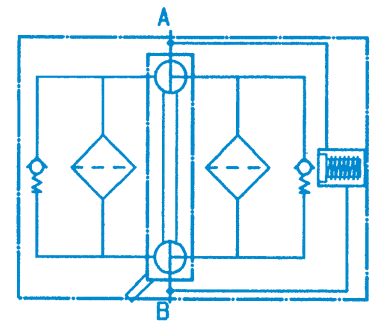
Maintenance Indicator

Maintenance indicators are used for monitoring the filter element's contamination status. They are available as visual or visual/electrical indicators. For technical data refer our brochure "Maintenance indicators".

A...visual	B...visual/electrical with electrical plug	D...visual/electrical with three light indicators 24 V and two switching points
Ordering information A2,5 = A2,5 A0 00 00P*	Ordering information B2,5 = A2,5 GW 02 00P*	Ordering information D2,5 = A2,5 GW 09 Z0P*
	Switching symbol	Switching symbol

*P = Buna N, V = Viton, E = Ethylene-Propylene, N = Neoprene also possible

Filter-Switching Symbol



Quality and Standardisation

The development, manufacture and assembly of EPE-industrial filters and filter elements are carried out within the framework of a certified quality-management-system in accordance with DIN EN ISO 9001. Certification of the filters by accredited institutions (for example TÜV, GL, LRS, LRIS, ABS, BV, DNV, DRIRE, UDT etc.) is available on request. The stability calculation and testing of the filters proceeds according to existing pressure vessel regulations, as well as in accordance with national and international norms. The CE - identification mark according to the Pressure Equipment Directive 97/23/EG depends upon the individual application and operating conditions. On request we will classify the filters.

50G-GB/01/02.03/2000