



Industrial Filters · Accumulators

Application

We equip our filters according to type and size with these permanent magnets. They can also be used for installing in gear casings, motor casings and oil receptacles of hydraulic equipment.

Bar – Magnets

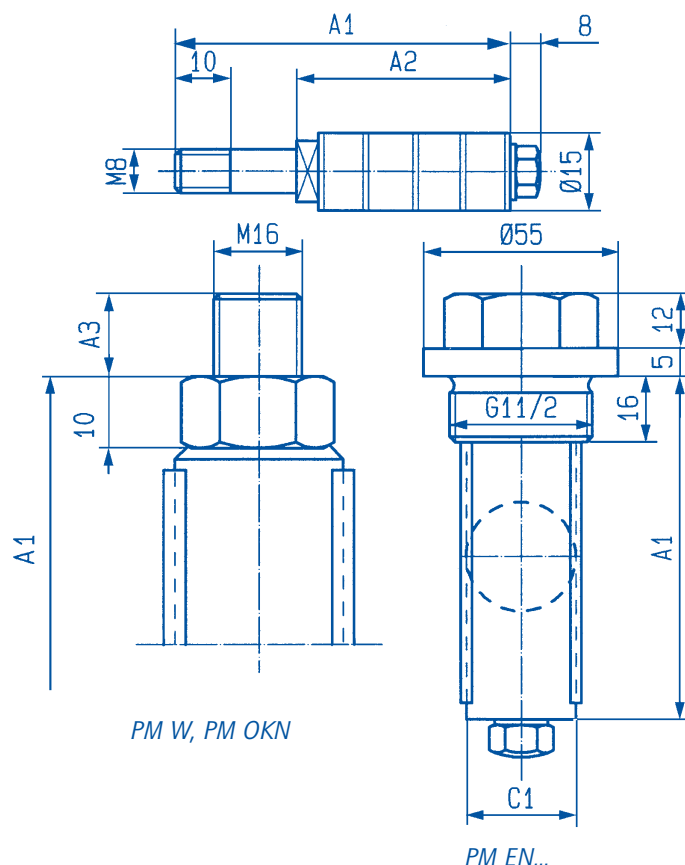
The magnet rings on the rods PM 1 to PM 3 are enclosed in a brass sleeve. Also the magnet core of the rods PM-W, and PM-OKN and PM-EN is in a brass sleeve. All PM – rods are completely chromium-plated.

Ring – Magnets

The ring-magnets size 2 to 4 are in aluminium containers, the number of magnets needed are placed on pins or in tubes.

Permanent-Magnets

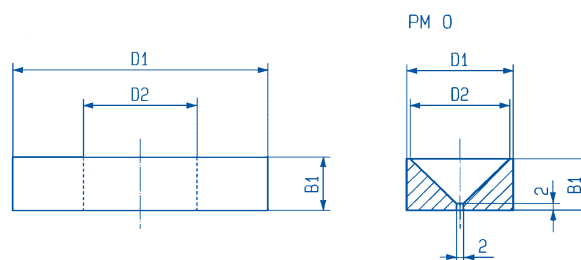
PM 1 - PM 3



Bar – Magnets

Part-No.	Type	Weight in kg	A1	A2	A3	C1
1148	PM 1	0,070	60,5	34,5	-	-
1149	PM 2	0,125	92,5	66,5	-	-
1150	PM 3	0,170	124,5	98,5	-	-
3459	PM W*	0,750	177	-	-	Ø 22
3105	PM OKN*	1,300	361	-	-	Ø 32
3306	PM EN 1100	0,750	361,5	-	15	Ø 22
3305	PM EN 2100	1,200	387	-	20	Ø 32

* with screw



Ring – Magnets

Part-No.	Type	Weight in kg	D1	D2	B1
1154	PM0	0,03	Ø 30	Ø 28	14,5
1155	Size 2	0,03	Ø 36	Ø 18,5	8
1156	Size 3	0,08	Ø 51	Ø 24,5	10
1157	Size 4	0,24	Ø 72	Ø 32	15
1158		0,15	Ø 75	Ø 55	15
1159		0,12	Ø 106	Ø 74	5,5

K. & H. Eppensteiner GmbH & Co. KG
 Hardtwaldstraße 43 · 68775 Ketsch/Rhein
 Postfach 1120 · 68768 Ketsch/Rhein
 Telefon: 0 62 02 / 6 03-0
 Telefax: 0 62 02 / 6 03-1 99
 E-Mail: info@eppensteiner.de
 Internet: www.eppensteiner.de



Technical modifications reserved!

Quality assured!

61-GB/02/09.02/3000