



Filters . Accumulators

Simplex inline filters

Type-10/25/100-L



Filters for inline installation

Wide application

Optimised flow characteristics

Low pressure drop

*Special high efficient
Filter media*

*Operating pressure: 10/25/100 bar
Connection up to DN 100*



Application

Filtering hydraulic fluids, lubricating oils and liquids. Suitable for assembly into pipelines.

Design

The filter housings are of a welded steel construction with opposite inlet and outlet connections.

The filter top cover is provided with vent arrangement while the housing is provided with drain arrangement. The filters are mounted either with two angle plates or on legs.

Filter Element

Pleated design with optimal pleat density and in various filter materials. Further detailed information can be found in our "Filter Elements" filter brochure.

Optional Accessories

Maintenance Indicator.

For monitoring the degree of clogging of the filter elements. Available in Optical / Optical-Electrical / DP Gauge / DP Switch options.

Permanent Ring Magnet.

For removal of ferrous contaminants from the fluid.

Bypass Valve.

To protect the filter element during start-up and over pressurisation due to clogging.

Air release / vent valve.

For removing the air from the filter during start-up and for safe depressurisation.

Drain valve.

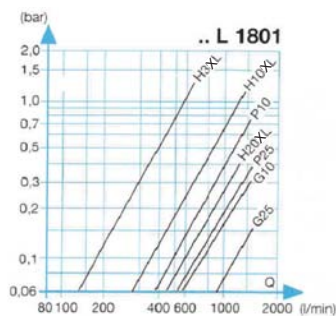
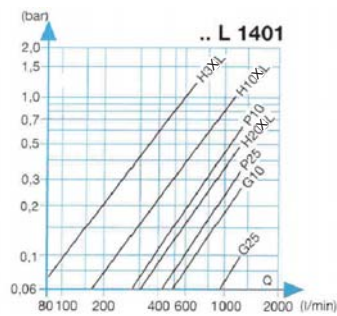
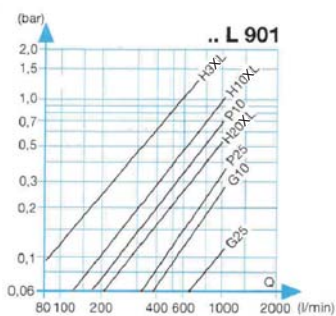
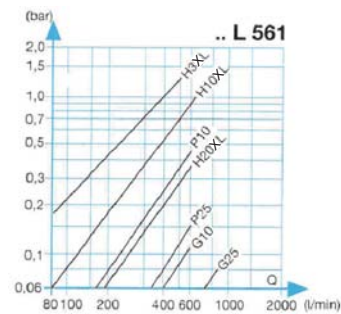
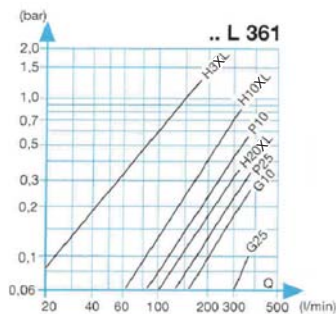
For easy removal of the contaminated fluid from the filter housing.

Performance characteristic curves

ΔP -Q-characteristic curves for complete filter

Oil viscosity : 30 mm²/s [30 cSt]

Specific weight : ≤ 0.9 kg/dm³



Ordering Information

Special design available on request.

Filter Type	Magnet	Maintenance Indicator	Connection	Material
L Simplex Inline	0 without 2 fitted	Design 0 without A.. Visual Mechanical B.. Visual-Electrical D.. Visual-Electrical with lamp G.. DP Gauge S.. DP switch X.. DP Gauge+Switch Switch Pressure ..1.5 1.5 bar ..2.0 2.0 bar ..2.5 2.5 bar ..5.0 5.0 bar	Port Connections F.. Sq Flange D.. DIN Flange S.. SAE Flange Port positions O. Inline-inlet & outlet in same line	O Standard

Filter Assembly → **25** **L** **361** **H10XL-A** **00** - **2** **8** **A5.0** - **F0** **P** **0** **A**
 Seal Kit → **D 25** **L** **361** - **A** - **F0** **P** **0**

Pressure	Nominal Size	Filter Media & Filtration Grade	Diff. Pressure	Element Model	Bypass Valve	Seal	Addl. Info
10 10 bar 25 25 bar 100 100 bar	361 451 561	Nominal filtration grade in µm G= stainless steel wire mesh, cleanable G10 G25 G40 G60 G80 G100 VS=bonded fabric, not cleanable VS 25 VS 40 VS 60 P=paper, not cleanable P5 P10 P25	A 30 bar o 15 bar	O...Standard adhesive T=100°C	O without 4 2 bar 8 5 bar	P Nitrile V Viton	O Without E Air Vent Valve D Drain Valve
Filter Element 1. Both sides open O-ring sealing	1401 1801 1801/0270	Absolute filtration grade (ISO16889) in µm H..XL=micro glass, not cleanable H1XL H3XL H6XL H10XL H20XL AS= micro glass-fibre, water absorbing, not cleanable AS1 AS3 AS6 AS10 AS20		O...Standard material	For filter element always '0'		

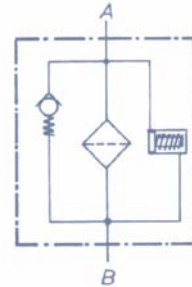
Filter Element → **1** **361** **H10XL** - **A** **00** - **0** **P** -

Maintenance Indicator

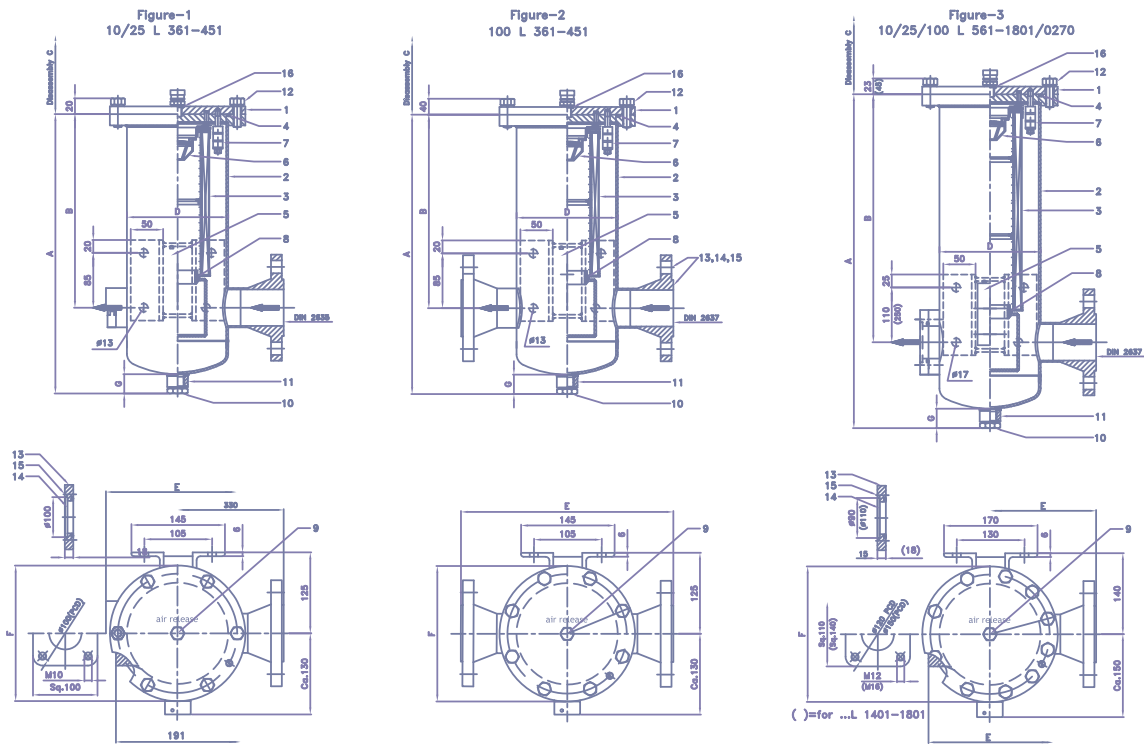
The maintenance indicator monitors the degree of dirt of the filter elements. They are available as visual or visual/electrical displays. See "Maintenance Indicator" catalog for technical data.

Filter Switching Symbol

A.... Visual	B... Visual/ electrical	D... Visual/electrical With two signal lights and two switching points
Ordering information A2.5 = F2.5-A0-00-00-P A5.0 = F5.0-A0-00-00-P	Ordering information B2.5 = F2.5-GW-02-00-P B5.0 = F5.0-GW-02-00-P	Ordering information D2.5 = F2.5-GW-26-00-P D5.0 = F5.0-GW-26-00-P
	Switch Symbol 	Switch Symbol V1 LED / green in use V2 LED / red S=100% V3 LED / yellow S=75%



* Buna N / Nitrile, V = Viton, E = Ethylene propylene; N = Neoprene possible



Equipment dimensions

Fig	Type		Connections	V in m/s	Weight (kgs)	A	B	C	ΦD	E	F	G
	PN	l/min										
1	10/25	L 361	Sq.FI.DN50	3	13	432	300	230	159	192	210	32
2	100		DIN FI.DN50		34	457			159	300	225	
1	10/25	L 451	Sq.FI.DN50	3	16	489	357	285	159	192	210	32
2	100		DIN FI.DN50		39	514			159	300	225	
3	10/25	L 561	Sq.FI.DN80	1.8	22	532	355	260	193.7	220	245	35
	100		DIN FI.DN80		53	553			194	400	260	
	10/25	L 901	Sq.FI.DN80	3	25	652	475	380	193.7	220	245	35
	100		DIN FI.DN80		60	673			194	400	260	
	10/25	L 1401	Sq.FI.DN100	3	30	777	600	510	193.7	220	245	35
	100		DIN FI.DN100		73	815			194	400	260	
	10/25	L 1801	Sq.FI.DN100	3.8	35	991	846	750	193.7	220	245	35
	100		DIN FI.DN100		84	1029			194	400	260	
10/25	L 1801/0270	Sq.FI.DN100	3.8	42	1223	1078	980	193.7	220	245	35	
100		DIN FI.DN100		97	1261			194	400	260		

All dimensions are in mm.

Note : Technical specifications are subject to change.

Spare part list

Item #	Type/Size	25 L	100 L	25 L	100 L	25 L	100 L	25 L	100 L	25 L	100 L	25 L	100 L	25 L	100 L
	Designation	361		451		561		901		1401		1801		1801/0270	
1	Filter top part/ cover	1		1		1		1		1		1		1	
2	Filter housing	1		1		1		1		1		1		1	
3	Filter element	1/1.361		1/1.451		1/1.561		1/1.901		1/1.1401		1/1.1801		1/1.0270	
4	O-ring	1/ 156x4				1/ 192x4									
5	Maintenance indicator or locking screw	1/F... 2/ M12x1,5													
6	Bypass valve	1		1		1		1		1		1		1	
7	Permanent magnet	3/ PM1		3/ PM1		3/ PM2		3/ PM2		3/ PM3		3/ PM3		3/ PM3	
8	O-ring	2/ 60x3.5				2/ 94x5									
9	Air Vent valve or blanking plug	1/ G¼"													
10	Locking screw	1/ G½"				1/ G¾"									
11	Sealing ring	1/A 22x27				1/A 26x32									
12	Hexagonal head bolt	6 M12x35	8 M16x75	6 M12x35	8 M16x75	8 M12x40	12 M16x75	8 M12x40	12 M16x75	8 M12x40	12 M16x75	8 M12x40	12 M16x75	8 M12x40	12 M16x75
13	Mating flange	2 Sq.85x13 C50/C60.3 DIN 2635	2 E50/60.3 DIN 2637	2 Sq.85x13 C50/C60.3 DIN 2635	2 E50/60.3 DIN 2637	2 Sq.110x15	2 E80/88.9 DIN 2637	2 Sq.110x15	2 E80/88.9 DIN 2637	2 Sq.140x18	2 E100/114.3 DIN 2637	2 Sq.140x18	2 E100/114.3 DIN 2637	2 Sq.140x18	2 E100/114.3 DIN 2637
14	O-ring/ sealing ring	2 55x3.5	2 57x95 DIN 2690	2 55x3.5	2 57x95 DIN 2690	2 90x3	2 89x132 DIN 2690	2 90x3	2 89x132 DIN 2690	2 108x3	2 108x152 DIN 2690	2 108x3	2 108x152 DIN 2690	2 108x3	2 108x152 DIN 2690
15	Hexagonal bolt	8 M10x25	8 M24x90 with nut	8 M10x25	8 M24x90 with nut	8 M12x30	8 M24x100 with nut	8 M12x30	8 M24x100 with nut	8 M16x35	8 M27x100 with nut	8 M16x35	8 M27x100 with nut	8 M16x35	8 M27x100 with nut
16	Sealing ring for air-vent valve	1/A 14x18													



Filters . Accumulators

Filter Assembly and Initial Operation

Check the system maximum pressure against the pressure on the name plate.

Screw the filter to the mounting support at the fixing angles and flanges, depending on the type. Make sure the flow direction lines up with the arrows and take into account the removal space of the element both towards the top and the bottom.

When the blanking plugs have been removed, install filter into the pipeline stress-free.

Initial operation

Ensure that the inlet and outlet connections of the filter are properly connected to the system.

During start-up and filling of filter open the air vent valve.

Close again when the fluid escapes. Filter is now ready for operation.

Filter Element change

If the red pin comes out of the maintenance indicator at normal operating temperature, or if a switch procedure is tripped in the electrical indicator, the filter housing is contaminated and the filter element must be changed.

Switch off the system.

Open the air-vent valve and release the pressure.

If required, drain the housing through the drain valve / plug.

Unscrew and remove the filter top cover.

Pull the filter element from the housing with slight forward and backward movements.

Clean reusable elements as per the specified procedure (refer "Filter Elements" datasheet).

Clean the magnets.

Place new or cleaned elements on the shaft / spigot in the filter housing and assemble.

Ensure that the valves, pressure springs and gaskets are correctly positioned. Replace faulty gaskets.

Start as per section "Initial Operation".

EPE PROCESS FILTERS & ACCUMULATORS PVT LTD

Techni Towers

C-54/A, A.P.I.E., Balanagar

Hyderabad -500 037, A.P., India.

Tel. Nos. : 23778803/23778804/23871445

Fax Nos. : 040-23871447.

Internet : www.epe-india.com

E-mail : business@epe-india.com